



FUJITRANS U.S.A., INC.

# Business presentation

July 2021

*Integrated Logistics to our valued customers*

FUJITRANS GLOBAL NETWORK  
<https://global.fujitrans.com/>



# Company Profile



## FUJITRANS U.S.A., INC.

Logistics keep moving forward in the World. Especially in the United States as a leading country, we are committed to ever-evolving logistics with intelligence and passion, and our mission is to provide integrated logistics to our valuable customers. We promise our customer's satisfaction whenever we provide our service by Ocean, Air and Land transportation. We are always here for you.



### Established

July 6th, 1981

100% owned by FUJITRANS CORPORATION

### Main Business

NVOCC

Freight Forwarding

Air Freight Forwarding

Customs Broker

Shipping Agency

Warehousing

Trucking Business

Project Cargo Transportation / Installation

Logistics Consultant

### Office

#### \*LOS ANGELES OFFICE (Head Office)

1231 E.230th Street, Carson, CA 90745 U.S.A. TEL +1-310-830-5151

#### \*CHICAGO BRANCH

9555 Soreng Avenue, Schiller Park, Illinois, 60176, U.S.A. TEL +1-630-616-7945

#### CONNECTICUT BRANCH

111 Founders Plaza, Suite 1804, East Hartford, CT 06108 U.S.A. TEL +1-860-308-2354

#### KENTUCKY BRANCH

100 Farmers Bank DR. Suite #300 Georgetown, KY 40324, U.S.A. TEL +1-502-868-0277

#### DALLAS BRANCH

16000 North Dallas Parkway, Tollway Plaza Suite 185, Dallas, TX 75248, U.S.A. TEL +1-972-755-3460

#### SAN FRANCISCO BRANCH

1970 Broadway Suite 1010 Oakland, CA 94612, U.S.A. TEL +1-510-496-4365

#### TORONTO BRANCH

3220 Caravelle Drive, Mississauga, ON L4V 1K9 Canada TEL +1-905-678-8335

\* Have a warehouse

# LAHQ Facilities & Equipments



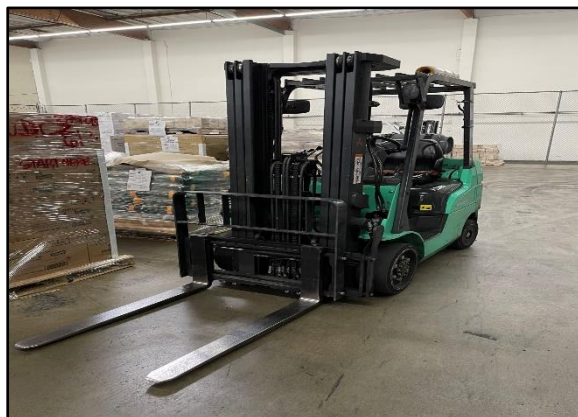
**LA Warehouse :  
110,000sqf**



**LA Heavy Forklift :  
53,000lbs**



**LA Mid Class Forklift :  
26,000lbs**



**LA Lease Forklift : 10 units  
with various capacity**

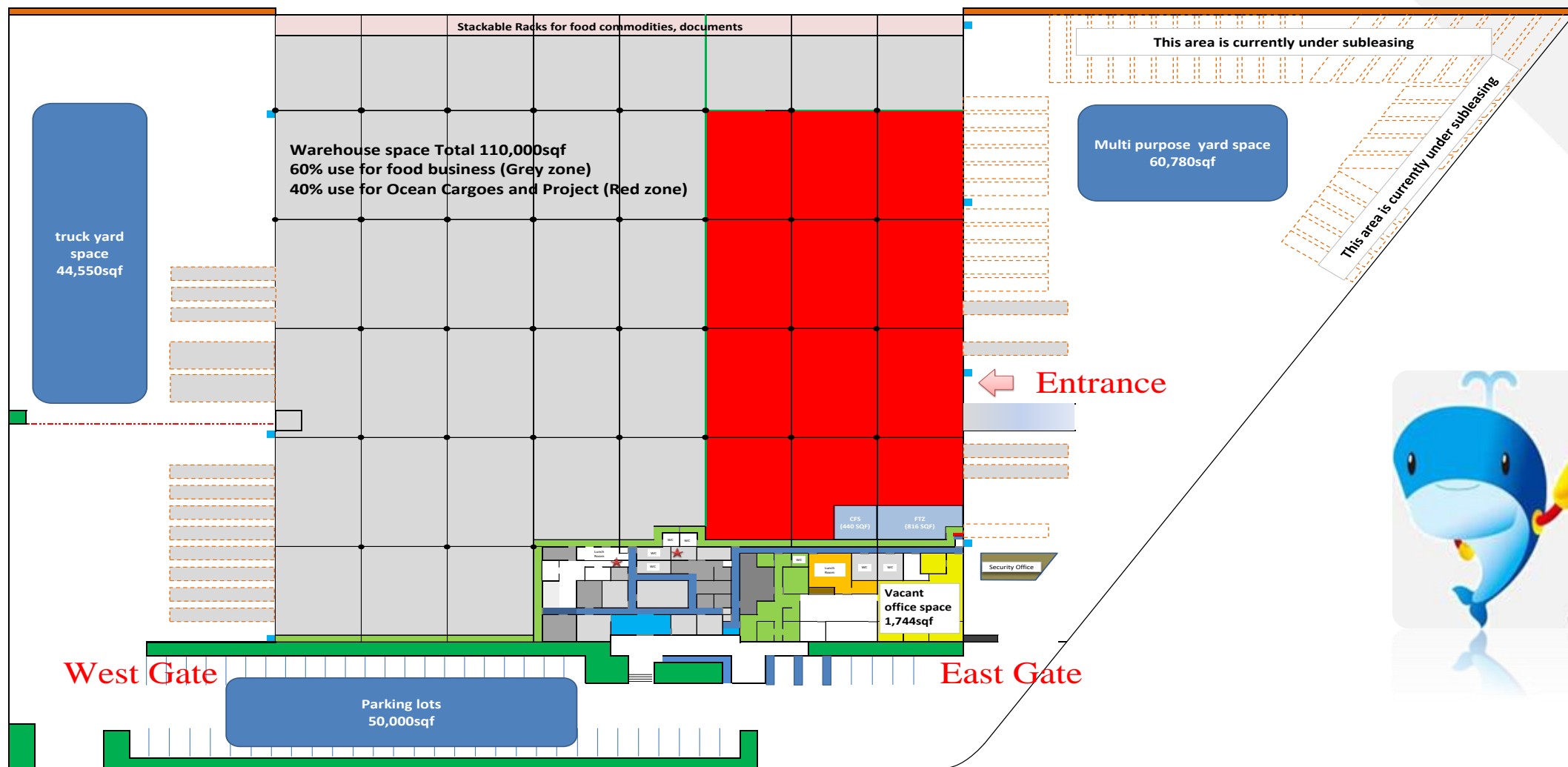


**LA Multi purpose yard space : Warehouse East side  
60,780 sqf**



# LAHQ Facilities & Equipments

## LA Warehouse : Layout as of Jun, 2021



# LAHQ Case Studies



**Crossdock operation  
(Food business)**



**Transloading operation**



**NVOCC (FCL / LCL)**



**Explosive Cargo Handling**



**Heavy Cargo handling**



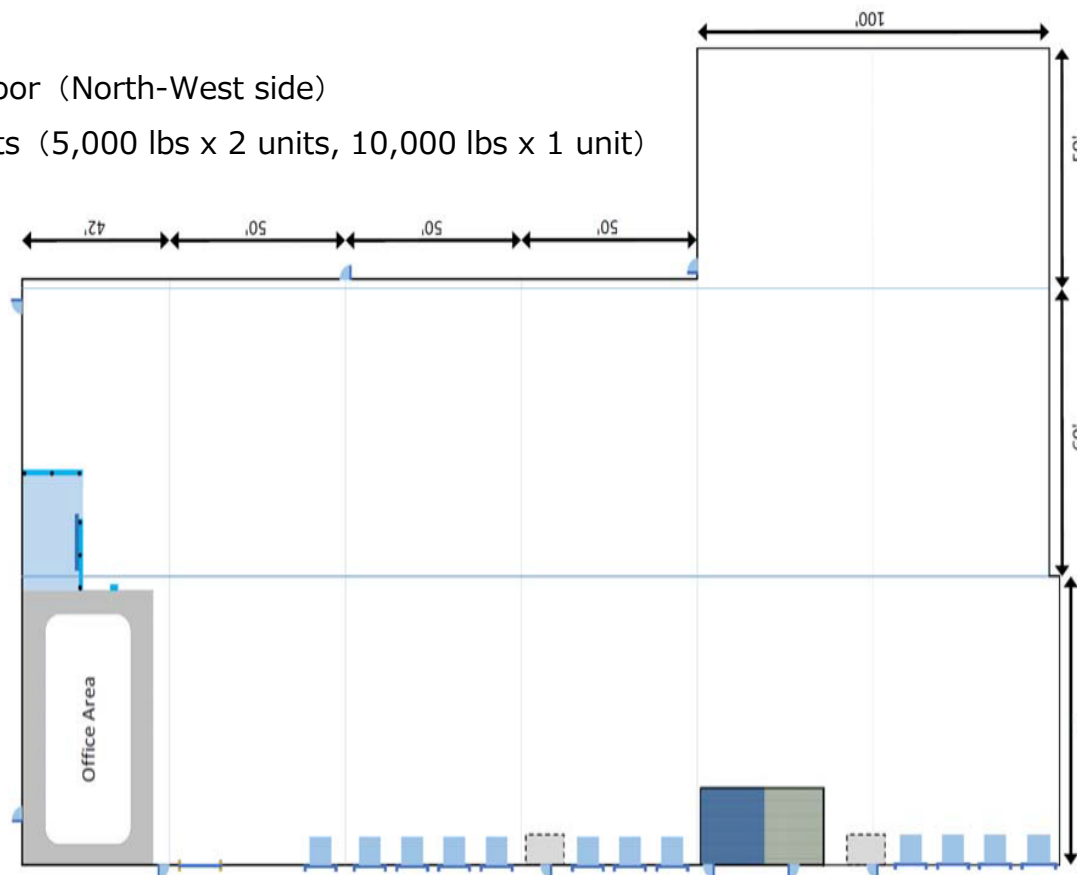
**On site machine Installation**



# Chicago Branch / Warehouse



- ❖ Address ``9555 Soreng Ave., Schiller Park, IL 60176  
(5 miles from O'Hare International Airport)
- ❖ Total Space ``39,860 SQF (Office ``2,109 SQF)
- ❖ Dock ``12
- ❖ Drive-In Door (North-West side)
- ❖ Forklift 3nits (5,000 lbs x 2 units, 10,000 lbs x 1 unit)



# Chicago Branch / Warehouse

## Export

Picked up export cargo is container at warehouse  
Main Commodity: Machinery Parts



## Import

Container is transferred from Chicago CY to warehouse for transloading  
Main Commodity: Production Material



## Cross dock

Inbound freights are sorting at warehouse and shipping out appropriate items / places  
Main Commodity: Auto Parts



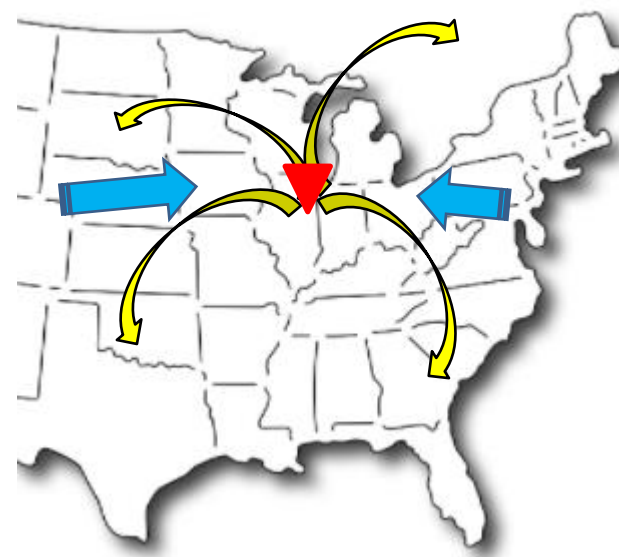
## Air

Picked up items are arrived at warehouse and prepared air flight (labeling, AES etc.) then, transfer to Airport  
Main Commodity: Aircraft Parts



## Logistics Hub

- Chicago CY rail connection with USWC, USEC, Mid West and South
- ORD (Chicago O'hea airport) has most capacity Mid west area
- Trucking can cover All direction and Canada is distance of one day drive





# Toronto Branch

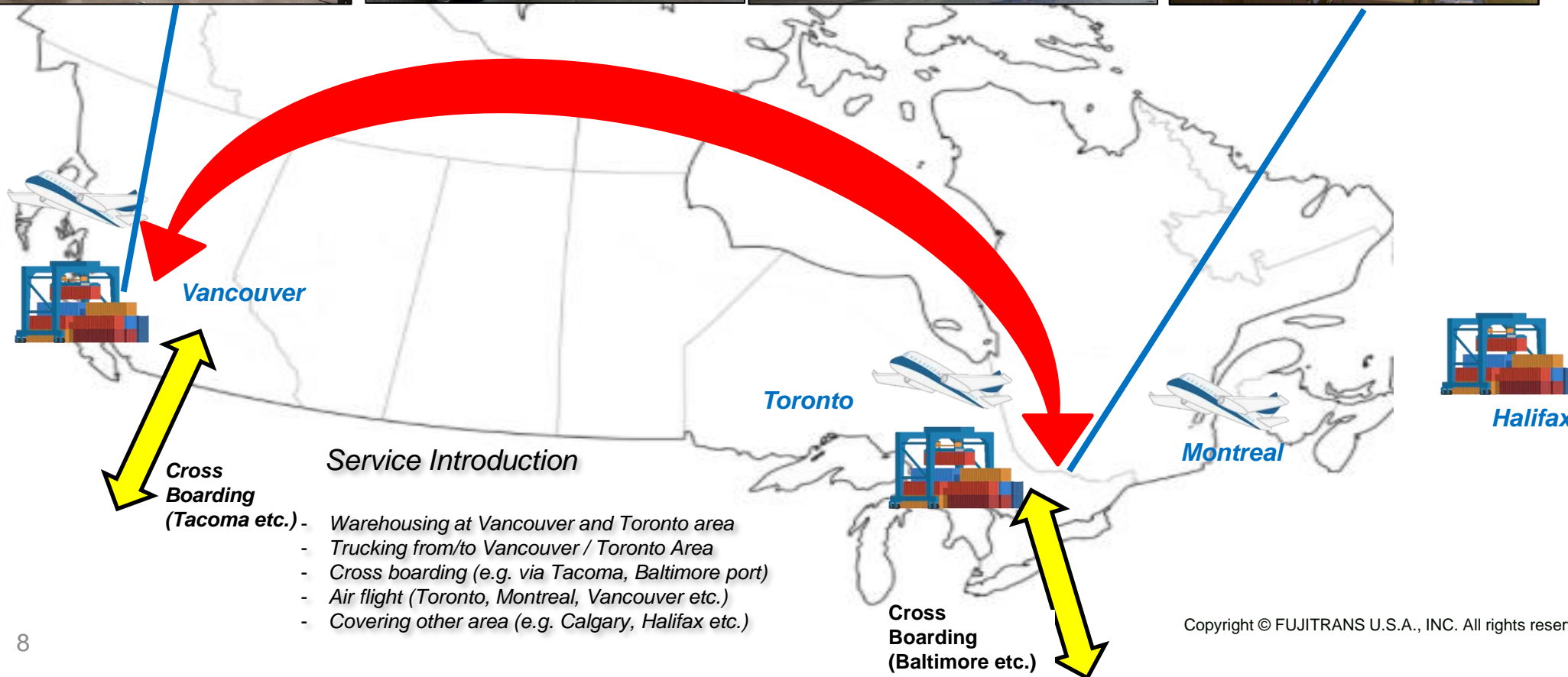
Warehouse (Vancouver)



Traversing (Vancouver – Toronto: Approx. 4,000 km)



Warehouse (Toronto)





# Connecticut Branch



- ❖ Address: 111 Founders Plaza, East Hartford, CT 06081
- ❖ Access: 15 miles from Bradley International Airport  
(Easy Access to JFK – 117 miles & BOS – 102 miles)
- ❖ Contact: Kimihiko (Zack) Miyake - Vice President  
TEL: (860) 308-2354  
E-mail: [miyake@fujitransusa.com](mailto:miyake@fujitransusa.com)

## Partner Airlines:

- Japan Airlines
- All Nippon Airways
- Delta Airlines
- American Airlines
- Nippon Cargo Airlines
- China Cargo Airlines
- Polar Air Cargo
- Lufthansa Cargo
- British Airways
- Air France
- Swiss International Air Lines

- ✓ **Air/Sea Forwarding**
- ✓ **Trucking (LTL/Project/Oversized)**
- ✓ **Storage & Packing**
- ✓ **Customs Brokerage**
- ✓ **Door-To-Door Service**
- ✓ **Logistic Consultation**



specialized  
logistics

# Operating Locations (with Partners)





# Dallas Branch

## 【Office】

- Address:  
**16000 North Dallas Parkway, Tollway Plaza Suite 185, Dallas, TX 75248, U.S.A.**
- Tel: **+1-972-755-3460**
- Established: **2015**



# Dallas Branch / Business

## 【USA/Mexico Business】

### ① Export/Import by Air & Ocean

Main Commodity: Aircraft parts

### ② Freight forwarder, NVOCC

Main Commodity: Automobile (L/C business)

### ③ Machinery rigging / Installation

Main Commodity: Machinery for automobile

### ④ Cross border transportation

Main Commodity: Machinery for automobile





# San Francisco Branch

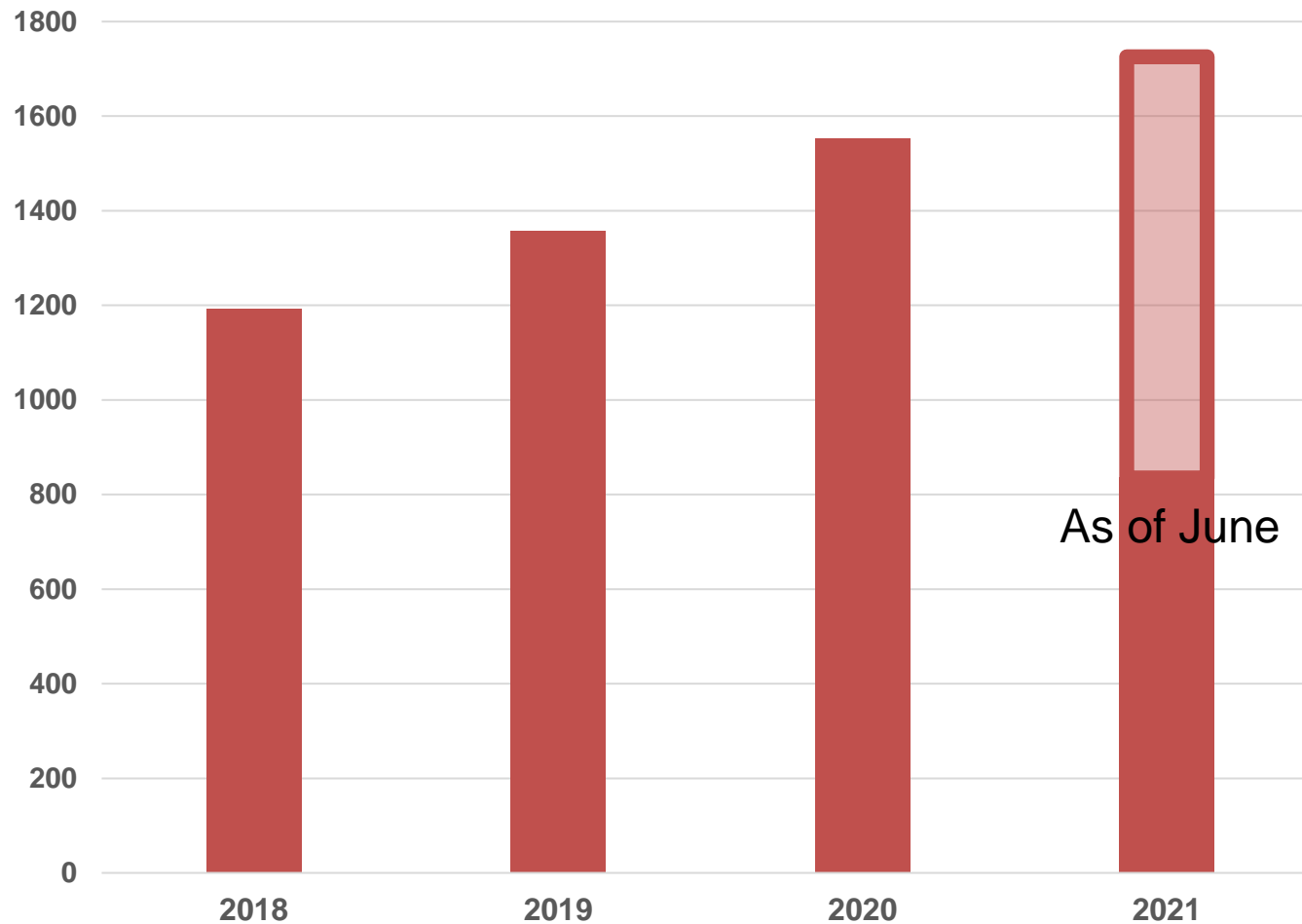
- **Address : 1970 Broadway Suite 1010 Oakland, CA 94612, U.S.A.**
- **TEL : +1-510-496-4365**
- **Established : 2018**
- **Core Business :**
  - Container Drayage Service (Export/Import/Local)**
  - Project Cargo Handling**



# San Francisco Branch

## Business Activity Data in Oakland Area

Container Handling Volume (TEU)





# Global Network

