



FUJITRANS U.S.A., INC.



Company Profile

Feb 2025



Integrated Logistics to our valued customers

FUJITRANS GLOBAL NETWORK
<https://global.fujitrans.com/>



Company Profile



FUJITRANS U.S.A., INC.

Logistics keep moving forward in the World. Especially in the United States as a leading country, we are committed to ever-evolving logistics with intelligence and passion, and our mission is to provide integrated logistics to our valuable customers. We promise our customer's satisfaction whenever we provide our service by Ocean, Air and Land transportation. We are always here for you.



Established

July 6th, 1981

100% owned by FUJITRANS CORPORATION

Main Business

NVOCC

Freight Forwarding

Air Freight Forwarding

Customs Broker

Shipping Agency

Warehousing

Trucking Business

Project Cargo Transportation / Installation

Logistics Consultant

Office

*LOS ANGELES OFFICE (Head Office)

1231 E.230th Street, Carson, CA 90745 U.S.A. TEL +1-310-830-5151

*CHICAGO BRANCH

9555 Soreng Avenue, Schiller Park, Illinois, 60176, U.S.A. TEL +1-630-616-7945

CONNECTICUT BRANCH

95 Glastonbury Boulevard, Suite 203 Glastonbury, CT 06033 U.S.A. TEL +1-860-308-2354

KENTUCKY BRANCH

100 Farmers Bank DR. Suite #300 Georgetown, KY 40324, U.S.A. TEL +1-502-868-0277

DALLAS BRANCH

16000 North Dallas Parkway, Tollway Plaza Suite 185, Dallas, TX 75248, U.S.A. TEL +1-972-755-3460

SAN FRANCISCO BRANCH

1970 Broadway Suite 1010 Oakland, CA 94612, U.S.A. TEL +1-510-496-4365

TORONTO BRANCH

3220 Caravelle Drive, Mississauga, ON L4V 1K9 Canada TEL +1-905-678-8335

* Have a warehouse

What we can ! - Business Lines -

NVOCC

➤ Provide ocean shipment by our House Bill of lading

FORWARDING

➤ Provide coordination of documentation and related service

CROSS DOCK

➤ Provide warehousing service, various project operations at Yard

CHB Dept. (Import)

➤ Provide import customs clearance & related services

SHIP Agency Dept.

➤ Provide our Principal vessel immigration & Husbanding

Air Forwarding business

➤ Provide indirect air shipment service for export and import

SUB-LEASE business

➤ Provide our facility to our tenants (LA, Chicago, Dallas)

TRUCKING business

➤ Provide brokerage trucking service in the USA

PROJECT business

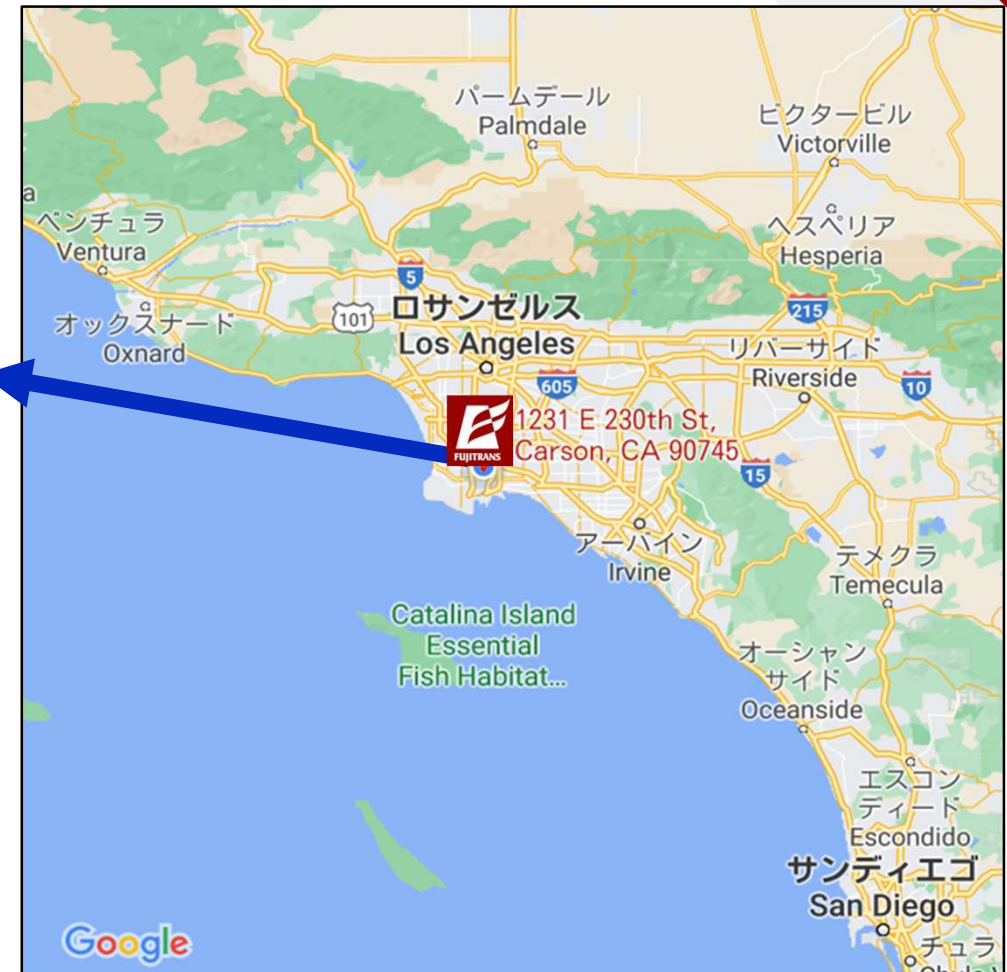
➤ Provide machine installation, dismantle and other related service

LAHQ Location



LOS ANGELES OFFICE (Head Office)

1231 E.230th Street, Carson, CA 90745 U.S.A. TEL +1-310-830-5151



LAHQ Facilities & Equipments



**LA Warehouse :
110,000sqf**



**LA Heavy Forklift :
53,000lbs**



**LA Mid Class Forklift :
26,000lbs**



**LA Lease Forklift : 10 units
with various capacity**

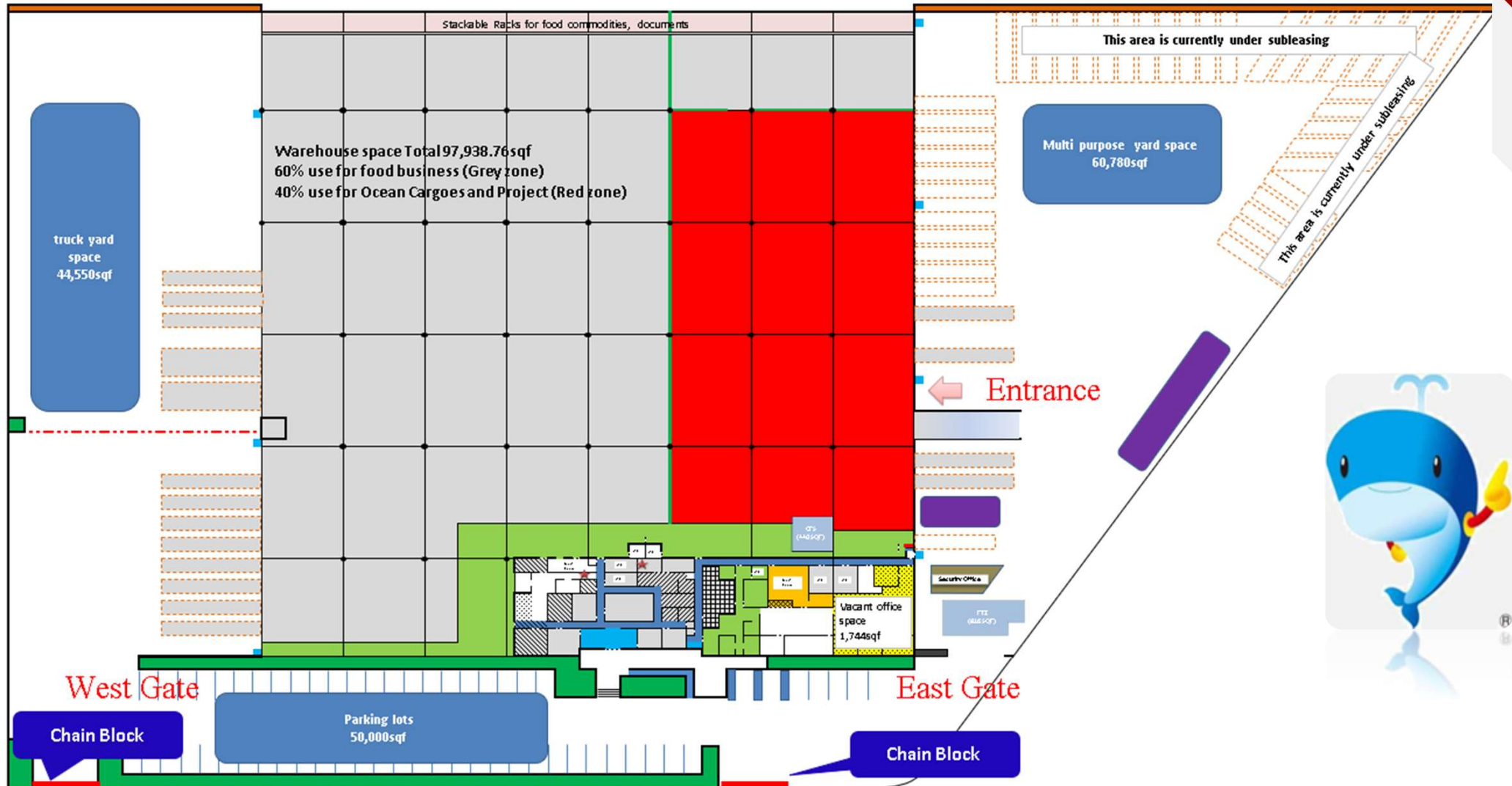


**LA Multi purpose yard space : Warehouse East side
60,780 sqf**



LAHQ Warehouse Layout

LA Warehouse Layout



LAHQ Case Studies



**Crossdock operation
(Food business)**



Transloading operation



NVOCC (FCL / LCL)



Explosive Cargo Handling



Heavy Cargo handling



On site machine Installation

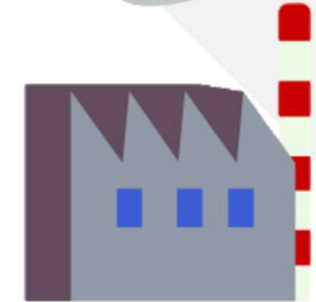
Focus on Transloading



Port of LA & Long Beach



FUJITRANS LAHQ



Destination in the USA



Short Drayage



Devanning



Loading



Delivery

*We provide One Stop Service
incl. Customs clearance !*

Warehouse Optional Services



Sorting



Storage



Scaling



Labeling

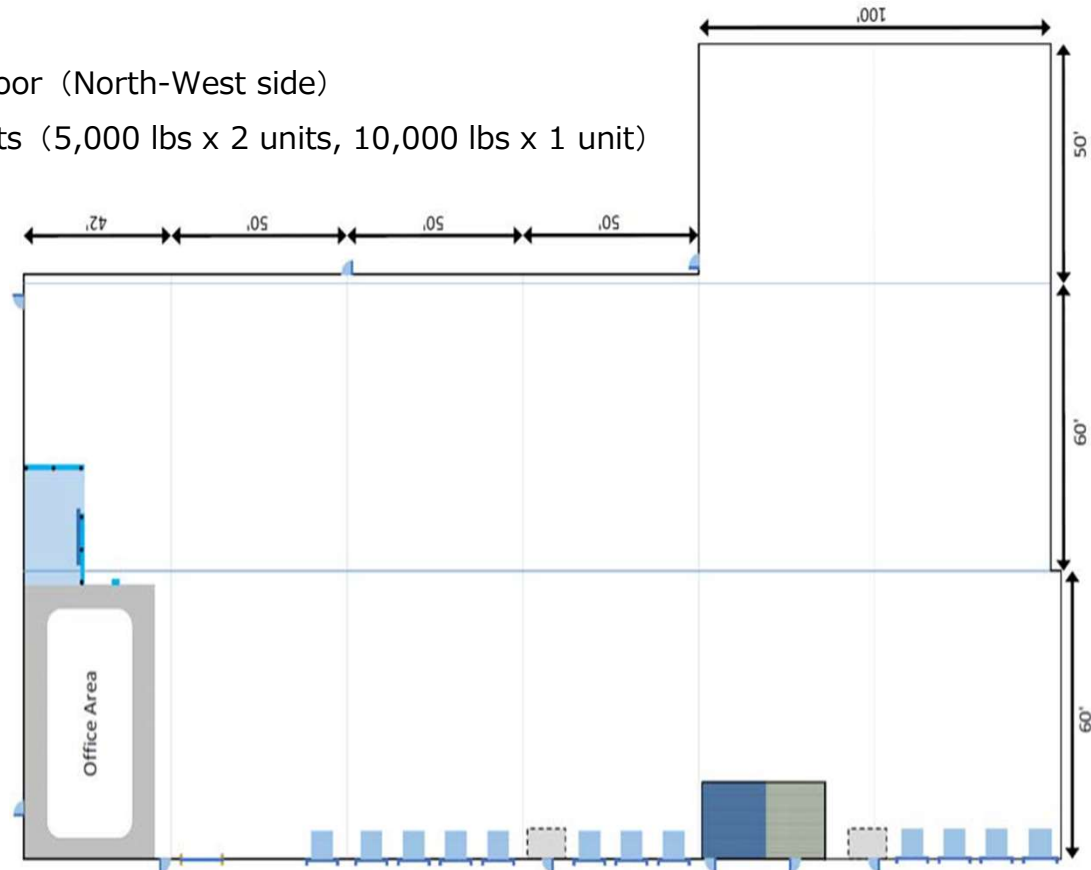


Palletizing

Chicago Branch / Warehouse



- ❖ Address : 9555 Soreng Ave., Schiller Park, IL 60176
(5 miles from O'Hare International Airport)
- ❖ Total Space : 39,860 SQF (Office : 2,109 SQF)
- ❖ Dock : 12
- ❖ Drive-In Door (North-West side)
- ❖ Forklift 3nits (5,000 lbs x 2 units, 10,000 lbs x 1 unit)



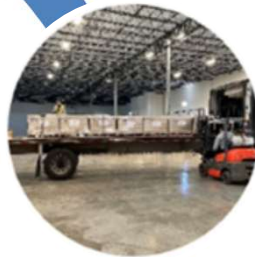


Chicago Branch / Warehouse



Export

Picked up export cargo is container at warehouse
Main Commodity: Machinery Parts



Import

Container is transferred from Chicago CY to warehouse for transloading
Main Commodity: Production Material



Cross dock

Inbound freights are sorting at warehouse and shipping out appropriate items / places
Main Commodity: Auto Parts

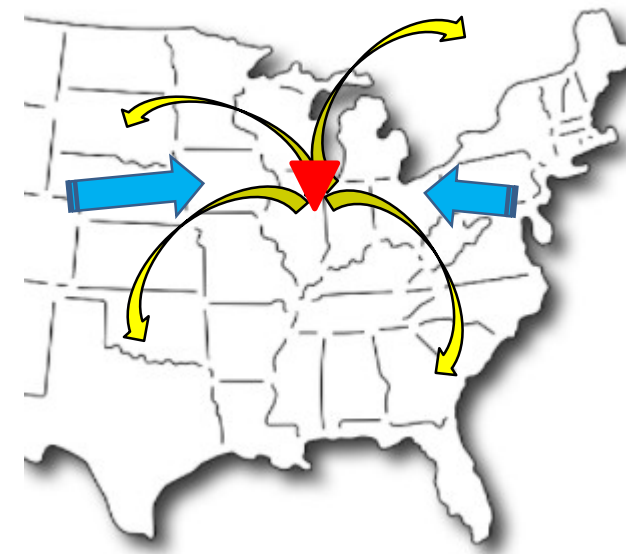


Air

Picked up items are arrived at warehouse and prepared air flight (labeling, AES etc.) then, transfer to Airport
Main Commodity: Aircraft Parts

Logistics Hub

- Chicago CY rail connection with USWC, USEC, Mid West and South
- ORD (Chicago O'hea airport) has most capacity Mid west area
- Trucking can cover All direction and Canada is distance of one day drive

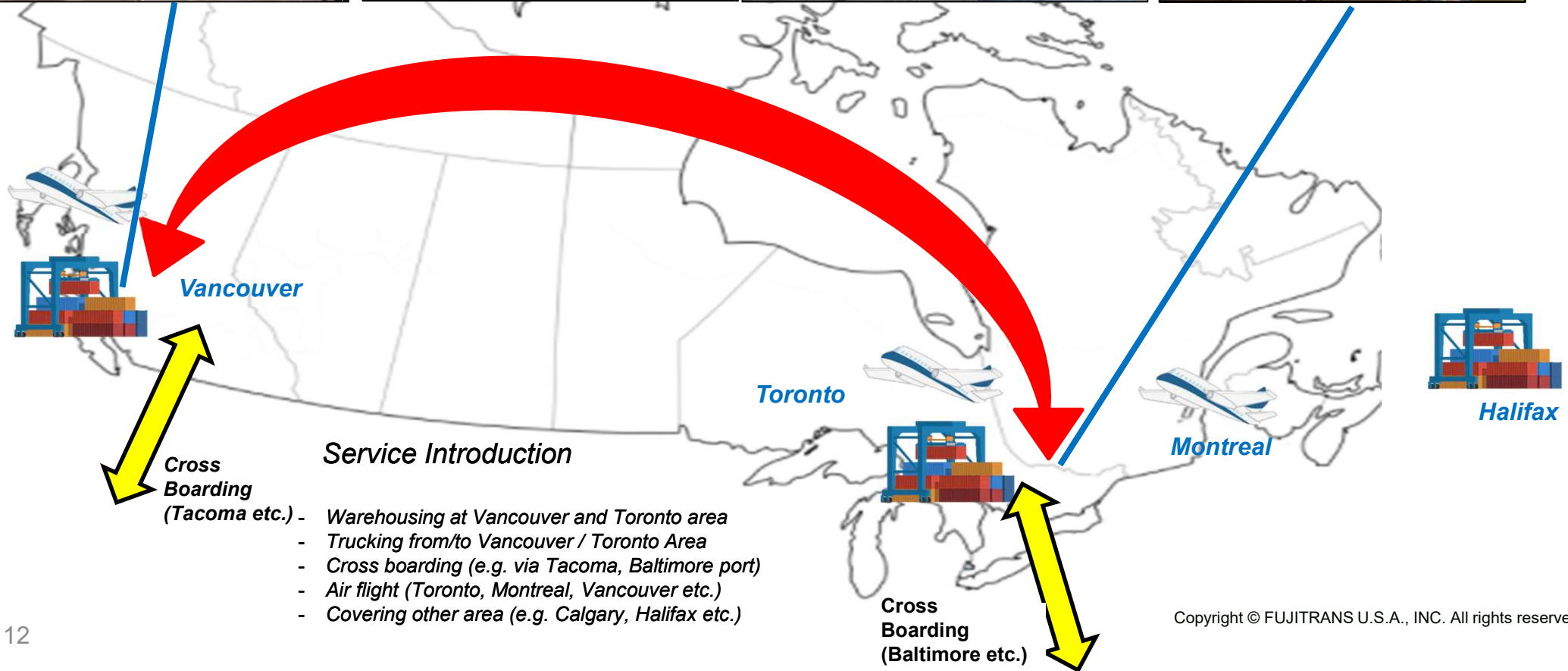


Toronto Branch

Warehouse (Vancouver)

Traversing (Vancouver – Toronto: Approx. 4,000 km)

Warehouse (Toronto)



Connecticut Branch



- ❖ Address: 95 Glastonbury Boulevard, Suite 203 Glastonbury, CT 06033 U.S.A.
- ❖ Access: 20 miles from Bradley International Airport
(Easy Access to JFK – 113 miles & BOS – 107 miles)
- ❖ Contact: Yosuke Eguchi - Branch Manager
TEL: (860) 308-2354
E-mail: eguchi@fujitransusa.com

Partner Airlines:

- Japan Airlines
- All Nippon Airways
- Delta Airlines
- American Airlines
- Nippon Cargo Airlines

- China Cargo Airlines
- Polar Air Cargo
- Lufthansa Cargo
- British Airways
- Air France
- Swiss International Air Lines

- ✓ **Air/Sea Forwarding**
- ✓ **Trucking (LTL/Project/Oversized)**
- ✓ **Storage & Packing**
- ✓ **Customs Brokerage**
- ✓ **Door-To-Door Service**
- ✓ **Logistic Consultation**



specialized
logistics

Operating Locations (with Partners)



Dallas Branch

【Office】

- Address:
16000 North Dallas Parkway, Tollway Plaza Suite 185, Dallas, TX 75248, U.S.A.
- Tel: +1-972-755-3460
- Established: 2015



Dallas Branch / Business

【USA/Mexico Business】

① Export/Import by Air & Ocean

Main Commodity: Aircraft parts

② Freight forwarder, NVOCC

Main Commodity: Automobile (L/C business)



③ Machinery rigging / Installation

Main Commodity: Machinery for automobile

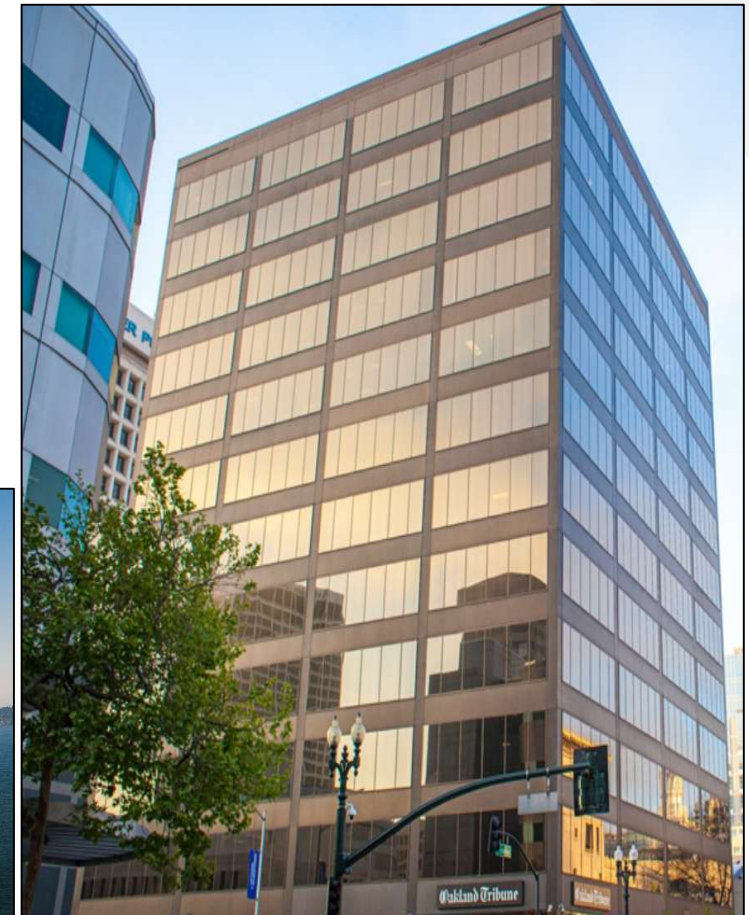
④ Cross border transportation

Main Commodity: Machinery for automobile



San Francisco Branch

- **Address : 1970 Broadway Suite 1010 Oakland, CA 94612, U.S.A.**
- **TEL : +1-510-496-4365**
- **Established : 2018**
- **Core Business :**
 - Container Drayage Service (Export/Import/Local)**
 - Project Cargo Handling**

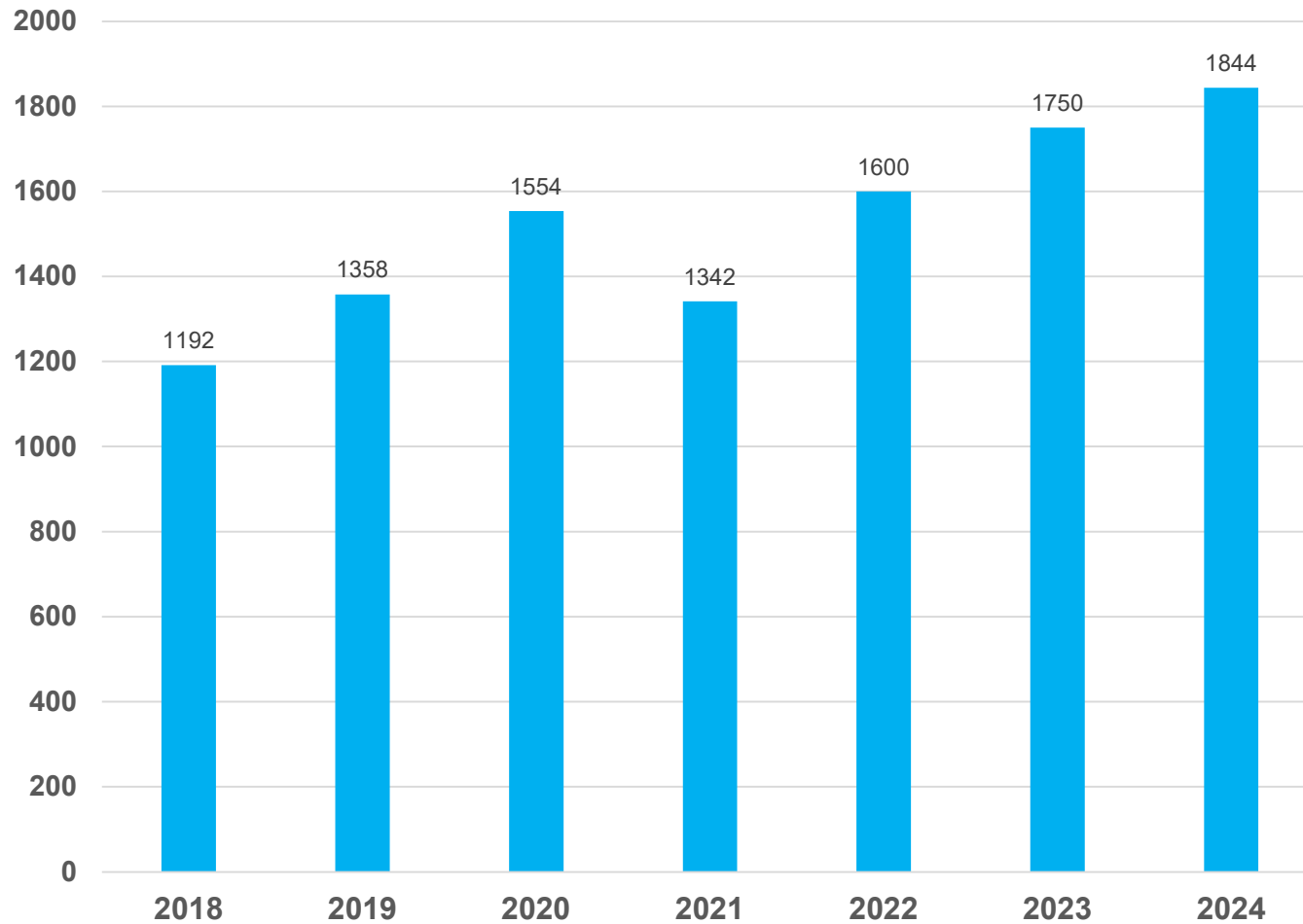


San Francisco Branch



Business Activity Data in Oakland Area

Container Handling Volume (TEU)



Global Network

